

# City House Projects® Appendix A



W6, London

Rational House™ has established City House Projects® Ltd to ensure the successful delivery of Rational House™ projects of all sizes.

CHP Ltd is formed of companies renowned for their expertise in managing and delivering world-class developments. Together they apply their collective and extensive knowledge and expertise to provide bespoke solutions to clients, using the Rational House™ product.

The CHP partners comprising Rational House™, Davis Langdon, an AECOM Company, AECOM and 3DReid are leaders in their respective fields of Masterplanning; Project, Cost & Consultancy; Engineering Design and Architecture.

[www.rationalhouse.com/cityhouseprojects](http://www.rationalhouse.com/cityhouseprojects)

For further information please contact:  
Amy Charles  
Business Development and Marketing Manager  
E: [amy.charles@rationalhouse.com](mailto:amy.charles@rationalhouse.com)  
M: +44 (0) 7508 021 084

## A new family dwelling for the 21st century

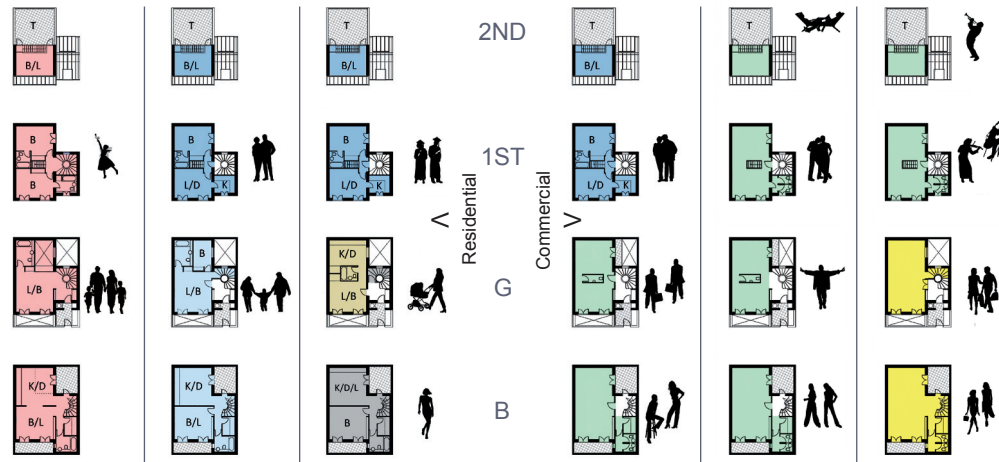
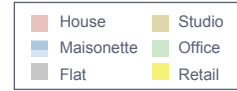


# Rational House™

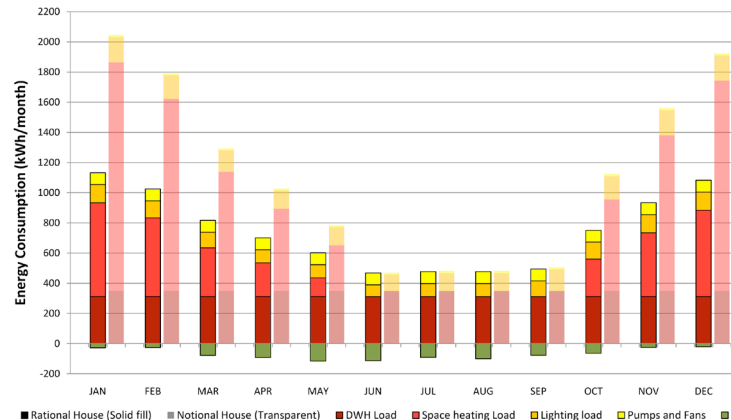
Rational House™ has created a new city dwelling for the 21st century. We offer high quality homes at affordable cost, providing a unique response to contemporary urban challenges including the need for a sustainable future.

[www.rationalhouse.com](http://www.rationalhouse.com)  
[www.flickr.com/photos/rationalhouse](http://www.flickr.com/photos/rationalhouse)

Multiple plan and dwelling size options and scope for commercial uses, all within the same building envelope.



Comparison of a Rational House™ energy consumption with a Notional House (UK):



Rational House™ responds to the needs of our fast-changing society. By providing homeowners with a highly flexible housing model that can adapt to suit their family needs, we have designed a true home for life. Other companies offer standardised residential buildings at competitive costs, but they do not combine all the features that set Rational House™ apart;

- **Flexibility and adaptability**
- **Speed of construction**
  - Panels erected approx 1 per hour = One house shell can be erected in two weeks
  - Panels connected by standard fixings
  - Modular construction = lower risk of over runs compared to traditional methods
- **Affordable cost of delivery and lifecycle value**
  - Affordable cost: £95 per shell, £145psf fully fitted (average)
  - Economies of scale enable percentage cost savings as number of units increases
  - High densities: equivalent to 4/5 storey flats, achieved at low-rise
- **Superior build quality and finishes**
  - High quality cast stone finish is achieved by off-site manufacture
- **Sustainability, meeting Code for Sustainable Homes Level 4**
  - Unique thermal mass system ensures increased thermal efficiency (see graph above)
  - Sustainable materials: include industrial by-product aggregates, recycled zinc and facing bricks.
- **Complies with the new London Housing Design Guide and exceeds current Building Regulations requirements.**

Tomorrow's  
modern classic

